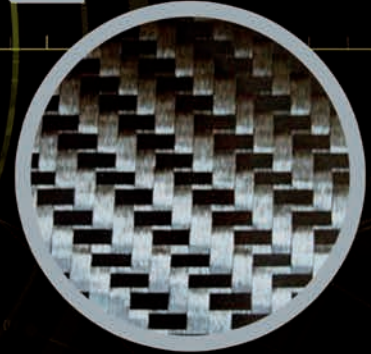


ZER



→ COMPOSITES

defect

ON-LINE AUTOMATIC SURFACE
INSPECTION & MEASUREMENTS



→ GLOBAL DEFECT MANAGEMENT ON HIGH PERFORMANCE COMPOSITE MATERIAL

→ RAW MATERIAL

- Tow inspection
- Dry fabric carbon, glass, kevlar, aramid

→ PRE-IMPREGNATED SURFACES

- Woven or UD surfaces

→ LAMINATED

- Multi axial surfaces

→ AUTOMATIC QUALITY ASSESSMENT FOR HIGHLY DEMANDING APPLICATIONS



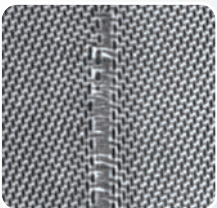
TOW INSPECTION

- Fuzz



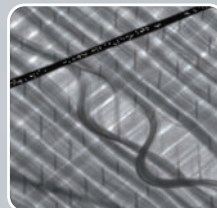
PRE-IMPREGNATED SURFACES

- Gaps



DRY FABRICS

- Woven defects



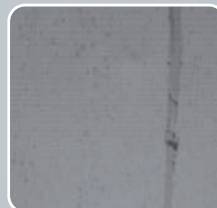
MULTI AXIAL SURFACES

- Process defects



PRE-IMPREGNATED SURFACES

- Fuzz

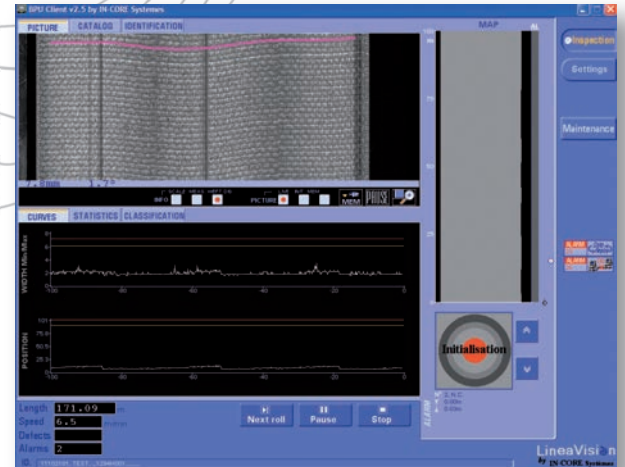
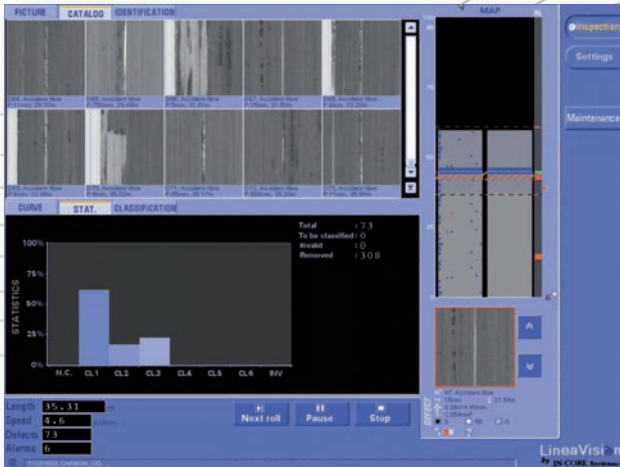


TRANSFER PAPER INSPECTION

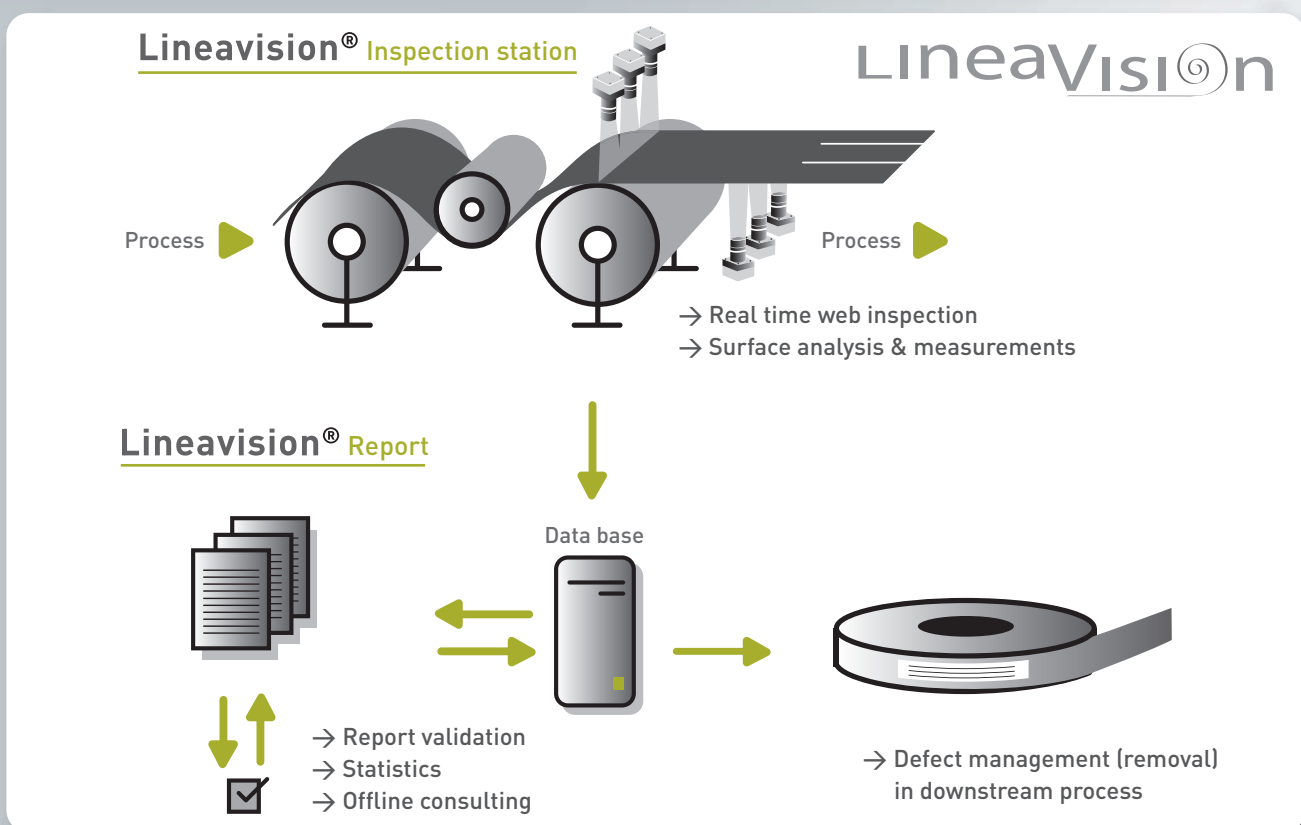
- Coating defects

→ USER-FRIENDLY INTERFACE GRAPHIC USER INTERFACE

→ LIVE DISPLAY OF DETECTED DEFECTS & MEASUREMENTS



- Inspection report of full width or per slit
- Automatic quality rules assessment on running surfaces
- Output actions
- Customized defect log





→ OUR RANGE OF SERVICES

SYSTEM SPECIFICATION

- Evaluation of project
- Feasibility study
- Customization
- Definition of project
- Flexibility/adaptation to future needs

SUPPORT

- Telephone hotline
- Technicians
- Remote access
- Application consulting

COMMISSIONING

- Installation
- Training
- Start-up

SERVICE

- Onsite repairs
- Spare parts
- Preventive maintenance

ON-LINE AUTOMATIC SURFACE
INSPECTION & MEASUREMENTS



IN-CORE Systèmes FRANCE
10 rue Ampère - 69680 Chassieu
tel. +33 (0)4 69 84 16 68
www.incore-systemes.com

